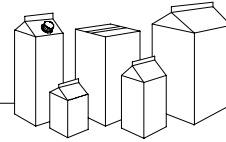




GABLE-TOP PACKAGING MACHINERY SYSTEMS



## NiMCO MODEL 480HLCP

NiMCO 480HLCP CAP-PAC® is a single lane form, fill and seal machine for gable-top cartons. Unique to this model is the in line integration of NiMCO's patented rotary spout applicator that is designed to ultrasonically weld plastic fitments from the inside out.

The CAP-PAC® Spout Applicator automatically feeds, applies and ultrasonically welds plastic spouts to gable-top containers.

Fitments can be applied to standard liquid package cross-sections, from 8 oz (250ml) to one gallon (5 liter) in Tetra Rex®, Pure Pak® style constructions, custom package formats and rectangular shapes.

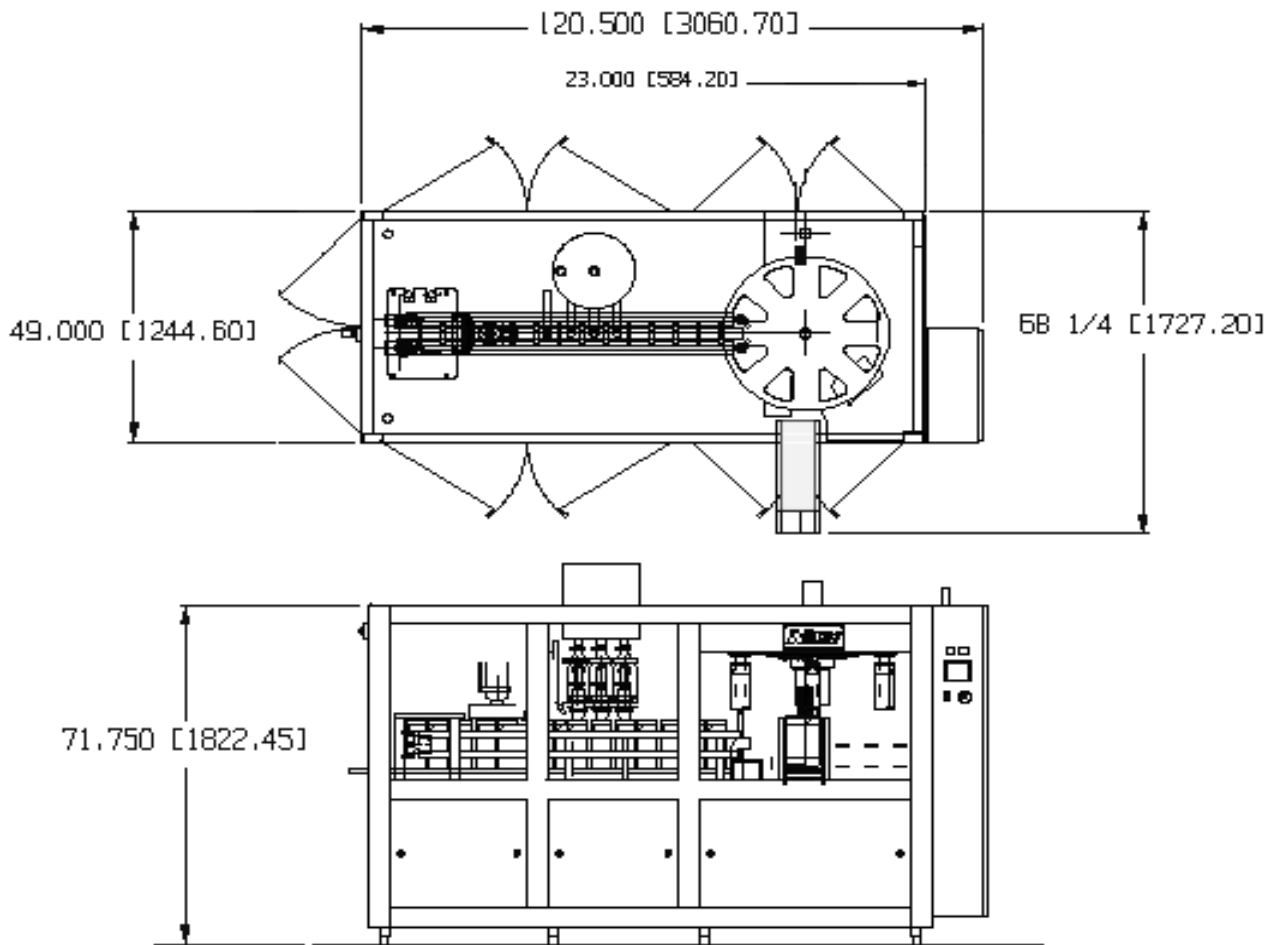


### Machine Operation

The NiMCO Model 480HLCP CAP-PAC® is designed for the inline forming, filling and sealing of 1/2 gallon (2 Liter) gable-top cartons. Utilizing state-of-the-art technology, this machine provides accurate product fills and dependable carton seals, with speeds up to 2500 CPH. Application of spouts from the inside of the container is available with the NiMCO CAP-PAC® Spout Applicator System. Other machine models are available for 1, 1.5, 4 and 5 liter carton volumes.

### Machine Features:

- Mechanical Drive System
- Heavy Duty Stainless Steel Frame
- Forced Air Electric Heaters
- Variable Frequency Drive
- PLC Control System
- NiMCO CAP-PAC® Spout Applicator®
- Low Maintenance Requirements
- Simple Size Changeover
- Compact Machine Dimensions




---

**Container Volume**

1/2 Gallon (2 Liter)

**Machine Model**

480HLCAP-PAC

**Production Speed**

40 CPM / 2400 CPH

Production speeds are subject to variations in carton and product

---

**Utilities:** (220, 415, 440V available)

Electrical: 380V 3pH 50Hz  
 Consumption: 28 KVA  
 Air: 85 psi / 5.8 bar  
 Consumption: 10.0 scfm / 283 lpm  
 Water: 50F / 10C Max  
 Consumption: 2.0 gpm / 7.6 lpm

**Machine Weight:**

Machine (Net): 6100 lbs (2775 kg)  
 Shipping Weight: 7000 lbs (3180 kg)

**Shipping Dimensions:**

80" W x 138"L x 84"H • Inches  
 2.1W x 3.5L x 2.25H • Meters

**Accessories:**

- Spare Parts Kits
- Date Coding Units
- Level Controls / Alarms
- Automatic Greasing System
- Auto Clean Systems
- Touch Screen Controls
- Carton Sterilization Systems
- Optional Filling Systems

*Due to continuing improvements, NIMCO reserves the right to change specifications and options without prior notice. Utility requirements are accurate at time of printing and may vary according to individual installation.*