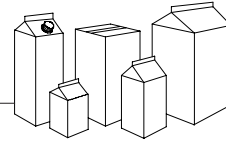




GABLE-TOP PACKAGING MACHINERY SYSTEMS



NiMCO MODEL 5125E

The NiMCO Model 5125E is a dual lane form / fill / seal machine for gable-top cartons. Unique to this model is the compact frame design, and simplicity of the component technologies.

The **new** CAP-PAC[®] Spout Applicator can be installed into this machine to automatically feed, apply and weld plastic spouts to gable-top containers. Fitments can be applied to standard liquid package cross-sections, from 8oz (250ml) to one gallon (5 liter), Tetra Rex[®] or Pure Pak[®] style constructions, custom package formats and rectangular shapes.

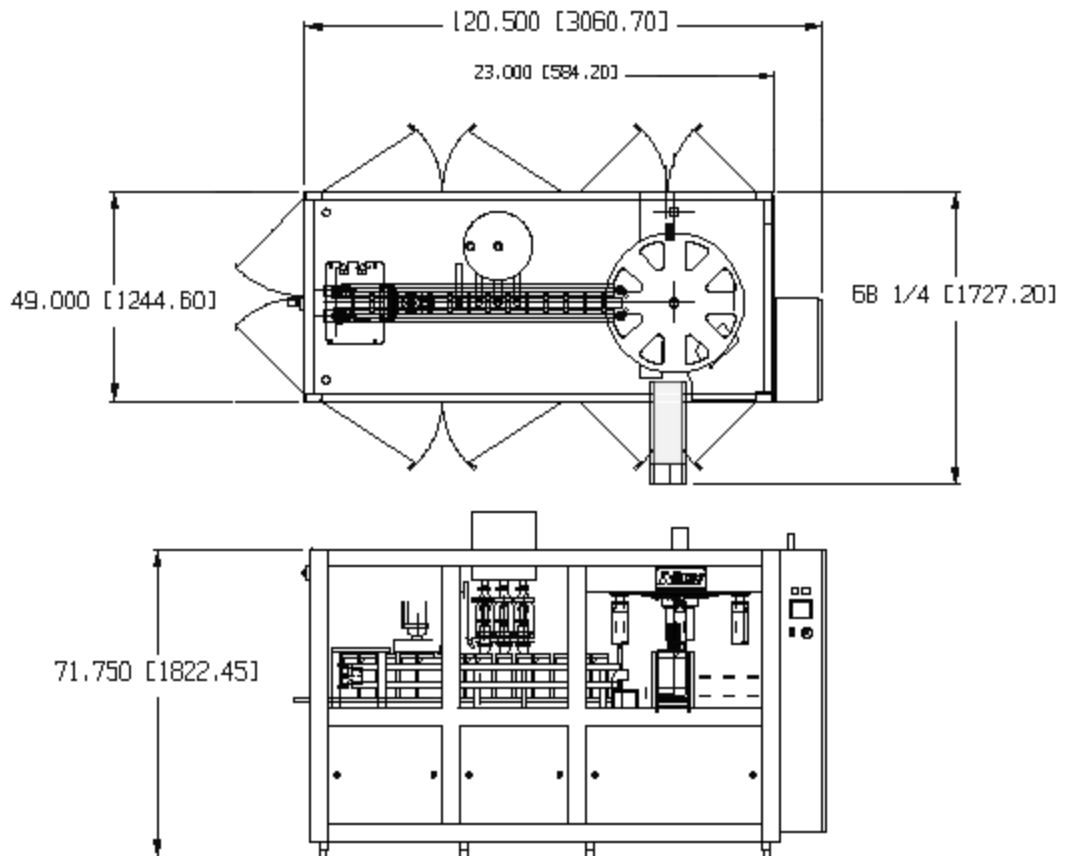


Machine Operation

The NiMCO Model 5125E is designed for the inline forming, filling and sealing of 4-10 oz (120-300 ml) gable-top cartons. Utilizing state-of-the-art technology, this machine provides accurate product fills and dependable carton seals, with speeds up to 7500 CPH. Application of spouts from the inside of the container is available with the NiMCO CAP-PAC[®] Spout Applicator System. Other machine models are available for 1.5, 2, 4 and 5 liter carton volumes.

Machine Features

- Mechanical Drive System
- Stainless Steel Frame
- Indexing Electric Heaters
- Variable Frequency Drive
- 16 oz (500 ml) Fill Option
- Simple Size Changeover
- Compact Machine Dimensions
- Optional NiMCO Spout Applicator[®]



Container Volume	Machine Model	Production Speed
4-10 oz (120-300 ml)	5125E	125 CPM / 7500 CPH
16 oz (500 ml)	5125E-500 ml	110 CPM / 6600 CPH

Production speeds are subject to variations in carton and product

Utilities: (220, 415, 440V available)

Electrical: 380V 3pH 50/60Hz
 Consumption: 28 KVA
 Air: 85 psi / 5.8 bar
 Consumption: 4.0 scfm / 113 lpm
 Water: 50F / 10C Max
 Consumption: 2.0 gpm / 7.6 lpm

Machine Weight:

Machine (Net): 6100 lbs
 Shipping Weight: 7000 lbs

Accessories:

- Spare Parts Kits
- Date Coding Units
- Level Controls / Alarms
- Dual Product Tanks
- Automatic Greasing System
- Auto Clean System
- CAP-PAC® Spout Applicator
- Carton Sterilization Systems
- Optional Filling Systems

NiMCO reserves the right to change specifications without prior notice.