

NiMCO MODEL 565E

The NiMCO Model 565E is a single lane form / fill / seal machine for gable-top carton. Unique to this model is the compact frame design, and simplicity of the component technologies.

The **new** CAP-PAC[®] Spout Applicator can be installed into this machine to automatically feed, apply and weld plastic spouts to gable-top containers. Fitments can be applied to standard liquid package cross-sections, from 8oz (250ml) to one gallon (5 liter), Tetra Rex[®] or Pure Pak[®] style constructions, custom package formats and rectangular shapes.

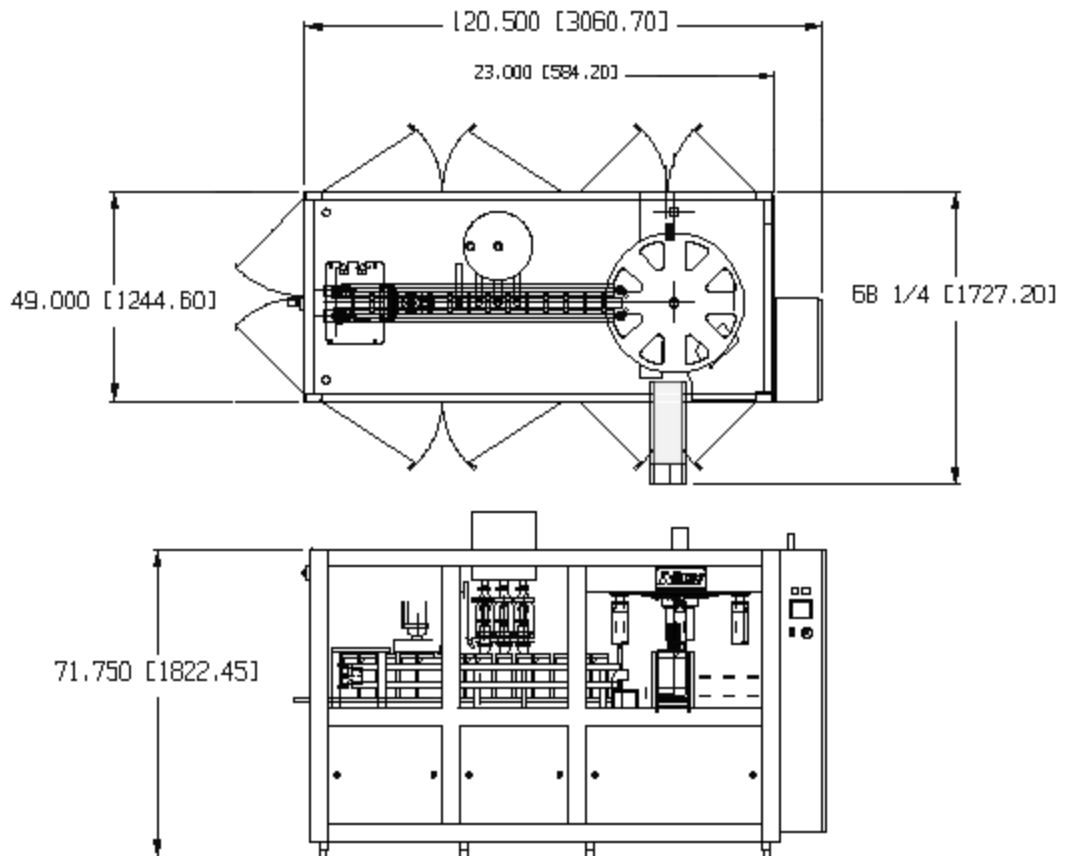


Machine Operation

The NiMCO Model 565E is designed for the inline forming, filling and sealing of 4-10 oz (120-300 ml) gable-top cartons. Utilizing state-of-the-art technology, this machine provides accurate product fills and dependable carton seals, with speeds up to 3300 CPH. Application of spouts from the inside of the container is available with the NiMCO CAP-PAC[®] Spout Applicator System. Other machine models are available for 1.5, 2, 4 and 5 liter carton volumes.

Machine Features

- Mechanical Drive System
- Stainless Steel Frame
- Indexing Electric Heaters
- Variable Frequency Drive
- 16 oz (500 ml) Fill Option
- Simple Size Changeover
- Compact Machine Dimensions
- Optional NiMCO Spout Applicator[®]



Container Volume

4-10 oz (120-300 ml)
16 oz (500 ml)

Machine Model

565E
565E-500 ml

Production Speed

55 CPM / 3300 CPH
50 CPM / 3000 CPH

Production speeds are subject to variations in carton and product

Utilities: (220, 415, 440V available)

Electrical: 380V 3pH 50/60Hz
Consumption: 27 KVA
Air: 85 psi / 5.8 bar
Consumption: 4.0 scfm / 113 lpm
Water: 50F / 10C Max
Consumption: 2.0 gpm / 7.6 lpm

Accessories:

- Spare Parts Kits
- Date Coders
- Level Controls / Alarms
- Automatic Greasing System
- Auto Clean System
- CAP-PAC® Spout Applicator
- Optional Filling Systems

Machine Weight:

Machine (Net): 4600 lbs (2080 kg)
Shipping Weight: 5400 lbs (2440 kg)

NiMCO reserves the right to change specifications without prior notice.