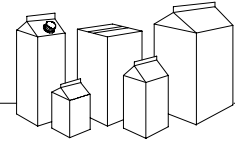




GABLE-TOP PACKAGING MACHINERY SYSTEMS



NiMCO MODEL 680QLCP

NiMCO 680QLCP CAP-PAC® is a single lane form, fill and seal machine for gable-top cartons. Unique to this model is the in line integration of NiMCO's patented rotary spout applicator that is designed to ultrasonically weld plastic fitments from the inside out.

The CAP-PAC® Spout Applicator automatically feeds, applies and ultrasonically welds plastic spouts to gable-top containers.

Fitments can be applied to standard liquid package cross-sections, from 8 oz (250ml) to one gallon (5 liter) in Tetra Rex®, Pure Pak® style constructions, custom package formats and rectangular shapes.



Machine Operation

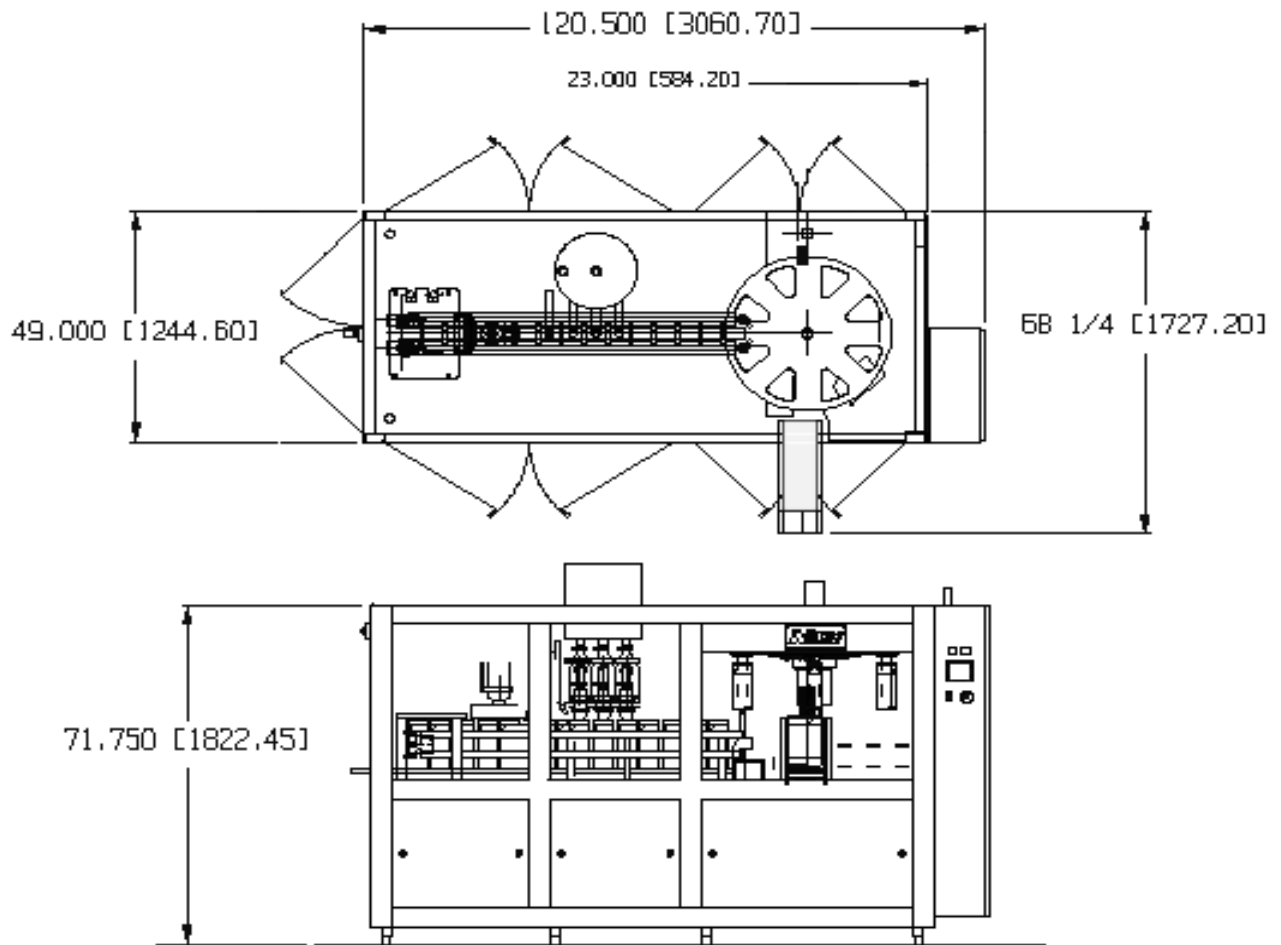
The NiMCO Model 680QLCP CAP-PAC® is designed for the inline forming, filling and sealing of 250 to 1 liter gable-top cartons. Utilizing state-of-the-art technology, this machine provides accurate product fills and dependable carton seals, with speeds up to 3000 CPH. Application of spouts from the inside of the container is available with the NiMCO CAP-PAC® Spout Applicator System. Other machine models are available for 1.5, 2, 4 and 5 liter carton volumes.

Machine Features:

- Mechanical Drive System
- Heavy Duty Stainless Steel Frame
- Forced Air Electric Heaters
- Variable Frequency Drive
- PLC Control System
- NiMCO CAP-PAC® Spout Applicator®
- Hot Filling Capabilities
- Low Maintenance Requirements
- Simple Size Changeover
- Compact Machine Dimensions

NiMCO Corporation - Website: www.nimco.com

1000 NiMCO Drive • Crystal Lake, IL 60014-1704 • USA • Tel 815-459-4200 • Fax 815-459-8119 • Email: info@nimco.com



Container Volume

250 - 1 Liter
8 to 32 oz

Machine Model

680QLCAP-PAC

Production Speed

50 CPM / 3000 CPH

Production speeds are subject to variations in carton and product

Utilities: (220, 415, 440V available)

Electrical: 380V 3pH 50Hz
Consumption: 28 KVA
Air: 85 psi / 5.8 bar
Consumption: 10.0 scfm / 283 lpm
Water: 50F / 10C Max
Consumption: 2.0 gpm / 7.6 lpm

Accessories:

- Spare Parts Kits
- Date Coding Units
- Level Controls / Alarms
- Automatic Greasing System
- Auto Clean Systems
- Touch Screen Controls
- Carton Sterilization Systems
- Optional Filling Systems

Machine Weight:

Machine (Net): 6100 lbs (2775 kg)
Shipping Weight: 7000 lbs (3180 kg)

Shipping Dimensions:

80" W x 138"L x 84"H • Inches
2.1W x 3.5L x 2.25H • Meters

Due to continuing improvements, NIMCO reserves the right to change specifications and options without prior notice. Utility requirements are accurate at time of printing and may vary according to individual installation.