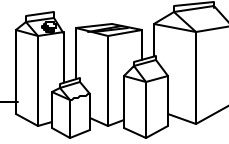




GABLE-TOP PACKAGING MACHINERY SYSTEMS



## NIMCO MODEL 780GL

The NiMCO Model 780GL is a single lane vertical form / fill / seal machine for gable-top carton. Unique to this model is the compact frame design, and simplicity of the component technologies.

The **new** CAP-PAC® Spout Applicator can be installed into this machine to automatically feed, apply and weld plastic spouts to gable-top containers. Fitments can be applied to standard liquid package cross-sections, from 8oz (250ml) to one gallon (5 liter), Tetra Rex® or Pure Pak® style constructions, custom package formats and rectangular shapes.

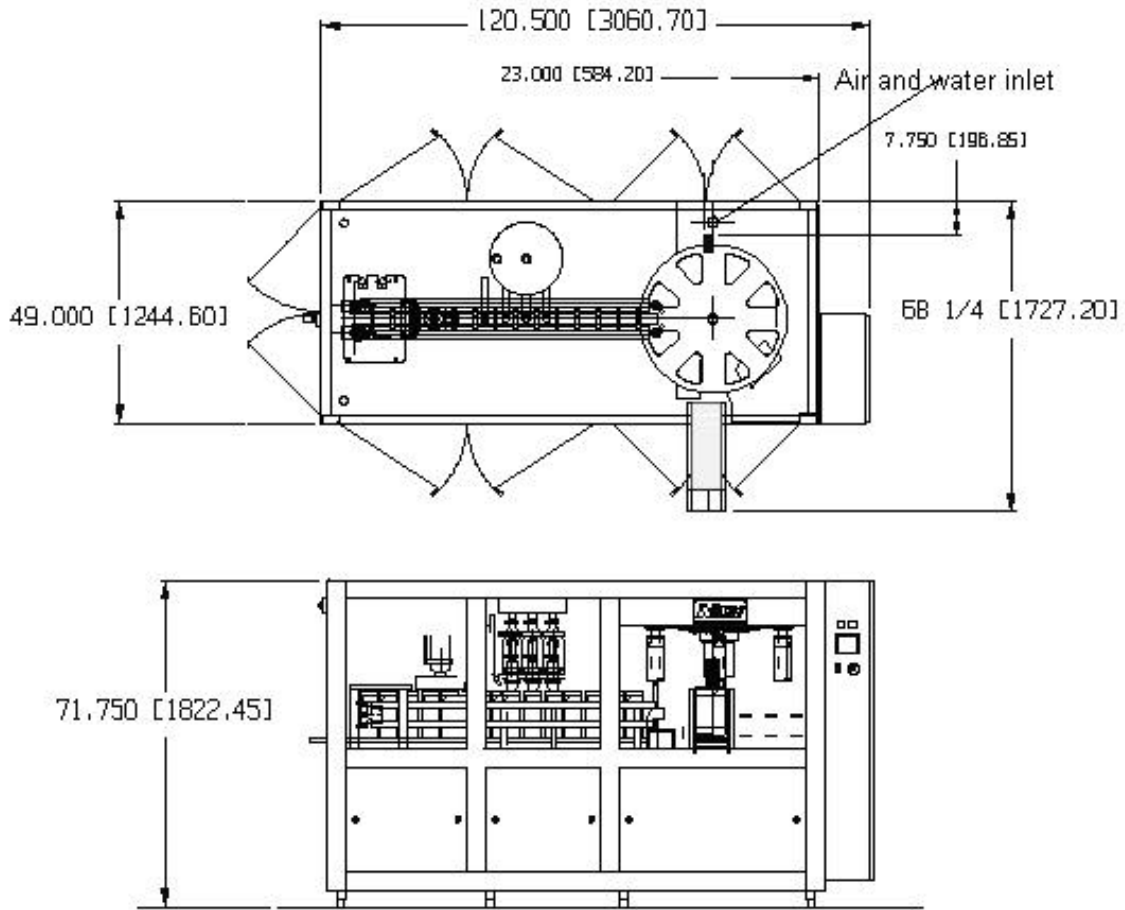


### Machine Operation

The NiMCO Model 780GL is designed for the inline forming, filling and sealing of one Gallon (4 Liter) PE coated Gable Top cartons. Utilizing state-of-the-art technology, this machine provides accurate product fills and dependable carton seals, with speeds up to 1500 CPH. Units are also available for filling Imperial and 5 Liter cartons. Application of spouts from the inside of the container is available with the NiMCO CAP-PAC® Spout Applicator System. Other machine models are available for 1.5, 2, 4 and 5 liter carton volumes.

### Machine Features

- Mechanical Drive System
- Heavy Duty Stainless Steel Frame
- PLC Control System
- Indexing Electric Heaters
- Variable Frequency Drive
- Simple Size Changeover
- Imperial / 5 Liter Filling Option
- Low maintenance requirements
- Optional NiMCO Spout Applicator®



Container Volume	Machine Model	Production Speed
Gallon / 4 Liter	780GL	25 CPM / 1500 CPH
Imperial Gallon	780GIL	20 CPM / 1200 CPH
5 Liter	780G5L	20 CPM / 1200 CPH

Production speeds are subject to variations in product and carton.

**Utilities:** (220, 415, 440V available)

Electric: 380V 3pH 50/60Hz  
 Consumption 27 KVA  
 Air: 85 psi / 5.8 bar  
 Consumption 10 scfm / 283 lt/min  
 Water: 50F / 10C Maximum  
 Consumption 2.0 gpm / 7.6 lt/min

**Machine Weight:**

Machine (Net): 5100 lbs (2330kg)  
 Shipping Weight: 5600 lbs (2690kg)

**Accessories:**

- Spare Parts Kits
- Date Coding Units
- Level Controls / Alarms
- Imperial / 5 Liter Filling Capacity
- Automatic Greasing System
- Auto Clean Systems
- Touch Screen Controls
- Carton Sterilization Systems
- CAP-PAC® Spout Applicator
- Optional Filling Systems

*Due to continuing improvements, NiMCO reserves the right to change specifications and options without prior notice. Utility requirements are accurate at time of printing and may vary according to individual installation.*