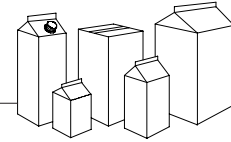




GABLE-TOP PACKAGING MACHINERY SYSTEMS



## NiMCO MODEL 8300QL

NiMCO Model 8300QL is a double lane, single index form, fill and seal machine for 8-32 oz (250-1000 ml) gable-top cartons. Unique to this model is the compact frame design, and simplicity of the component technologies. Equipped with two product tanks, the 8300QL is capable of filling two separate products and / or carton volumes simultaneously.

The **new** CAP-PAC® Spout Applicator can be installed into this machine to automatically feed, apply and weld plastic spouts to gable-top containers. Fitments can be applied to standard liquid package cross-sections, from 8oz (250ml) to one gallon (5 liter) with Tetra Rex®, Pure Pak® style constructions, custom package formats and rectangular shapes.

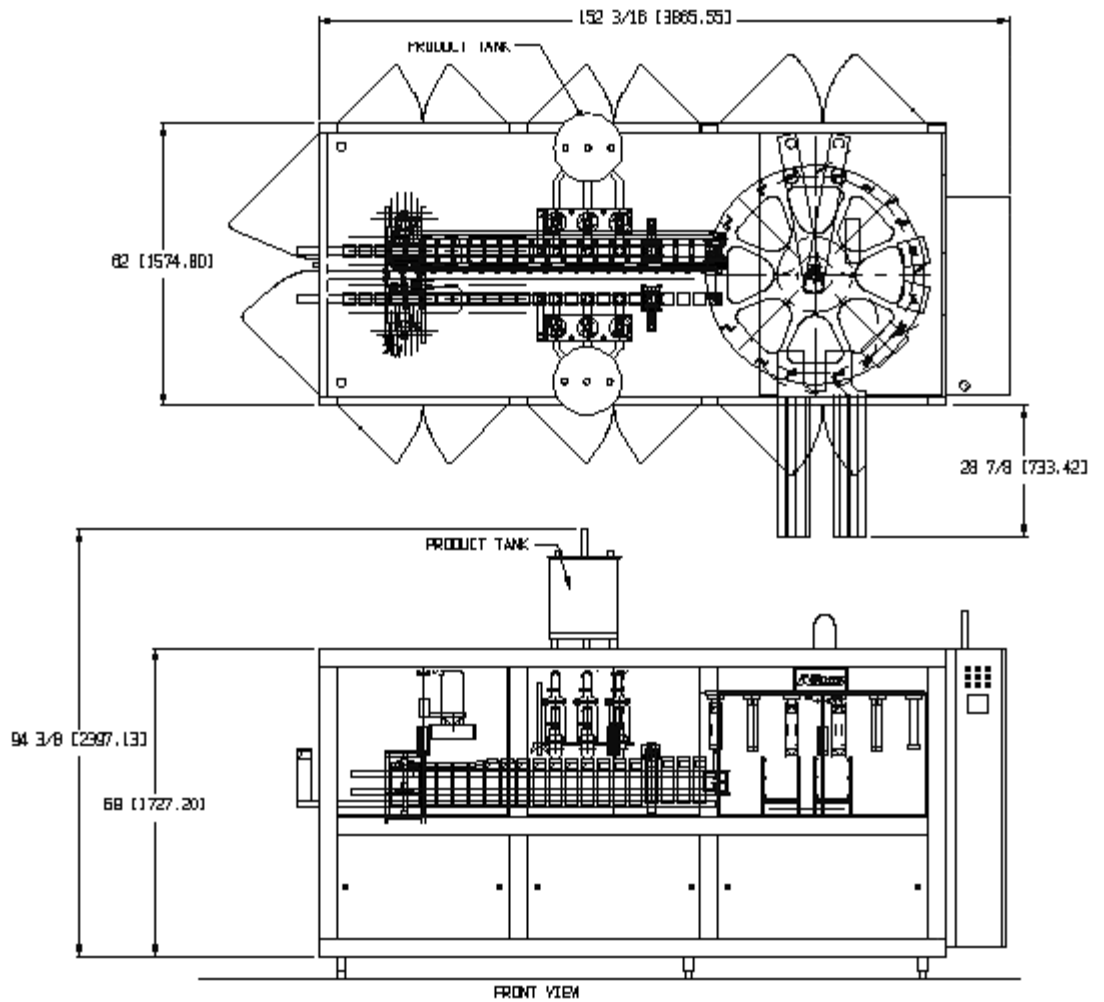


### Machine Operation

The NiMCO Model 8300QL is designed for the inline forming, filling and sealing of 8-32 oz (250-1000ml) gable-top cartons. Utilizing state-of-the-art technology, this machine provides accurate product fills and dependable carton seals, with speeds up to 6000 CPH. Application of spouts from the inside of the container is available with the NiMCO CAP-PAC® Spout Applicator System. Other machine models are available for filling carton volumes from 250 ml to 5 liter.

### Machine Features

- Mechanical Drive System
- Stainless Steel Frame
- Indexing Electric Heaters
- PLC Control System
- Dual Product Tanks
- Variable Frequency Drive
- Simple Size Changeover
- Compact Machine Dimensions
- Optional NiMCO Spout Applicator®



**Container Volume**

8-32 oz (250-1000ml)

**Machine Model**

8300QL

**Production Speed**

100 CPM / 6000 CPH

Production speeds are subject to variations in carton and product

**Utilities:** (220, 415, 440V available)

Electrical: 380V 3pH 50/60Hz  
 Consumption: 52 KVA  
 Air: 85 psi / 5.8 bar  
 Consumption: 14.0 scfm / 396 lpm  
 Water: 50F / 10C Max  
 Consumption: 4.0 gpm / 15.2 lpm

**Machine Weight:**

Machine (Net): 9700 lbs (4390 kg)  
 Shipping Weight: 10800 lbs (4890 kg)

**Accessories:**

- Spare Parts Kits
- Date Coding Units
- Level Controls / Alarms
- Automatic Greasing System
- Auto Clean System
- HEPA Air Filter Unit
- Machine Sanitizing System
- Carton Sterilization Units
- CAP-PAC® Spout Applicator
- Optional Filling Systems

*NiMCO reserves the right to change specifications without prior notice.*