

## SPOUT APPLICATOR SYSTEM

The **new** CAP-PAC® Spout Applicator System, due to its miniature size, can be installed into most NiMCO and competitive gable-top machines. This system will automatic feed, apply and weld plastic spouts to gable-top containers.

Fitments can be applied to standard liquid package cross-sections, from 8oz (250ml) to one gallon (5 liter, Tetra Rex® or Pure Pak® style constructions, custom package formats and rectangular shapes.

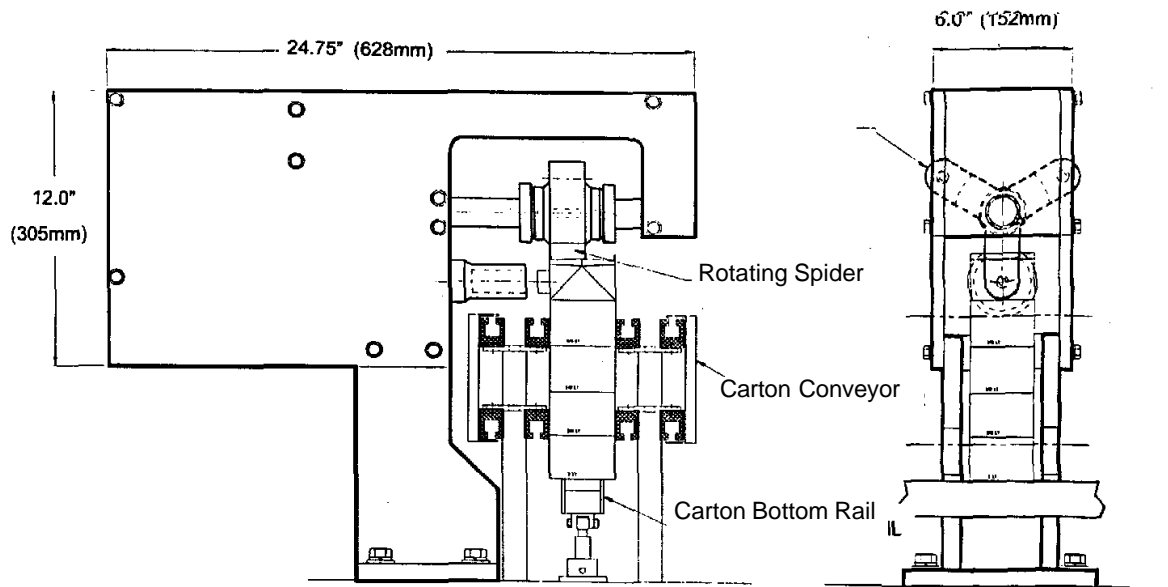


### Machine Operation:

The CAP-PAC® Spout Applicator is designed for the inline feeding, inserting and welding of plastic fitments (spouts) to paperboard gable-top cartons. Utilizing state-of-the-art technology, this system provides accurate and dependable application of spouts from the inside of the container. Models are available for Slim Pak, 1, 2, 4 and 5 liter carton volumes.

### Machine Features:

- Patented rotary applicator head
- Compact system design
- PLC control
- Superior ultrasonics system
- Spout feeder / Orienting bowl
- Simple size changeover
- Electro mechanical synchronization with machine index
- Low Maintenance
- Optional Spout Elevator



Electrical				Compressed Air	Fitment System
KVA	Volts	Phase	Hertz		
28	380	3	50 or 60	SCFM (M3/S)	Vibratory Hopper 1500 pcs.
	415			7.0 @ 85 PSI	Cap Feeder Bowl
	440			vacuum included (198 @ 5.8 bar)	Cap-Pac® Applicator Ultrasonic Welder

Container Volume	Machine Model	Production Speed
8oz - 32oz (250ml - 1L)	QL CAP-PAC	50 CPM/3000 CPH
Half Gallon (2 Liter)	HL CAP-PAC	45 CPM/2700 CPH
Gallon (5 Liter)	G CAP-PAC	25 CPM/1500 CPH

Production speed is subject to carton and cap variations.

**Accessories:**

NiMCO's CAP-PAC® Modules are designed to apply commercial fitments to Pure Pak® and Tetra Rex® style containers, and are adaptable to existing NiMCO and other gable-top filler machines.

The CAP-PAC® Module may be operated as an independent spout applicator and carton feeder, or PLC integrated to control all filling machine operations.

Accessories must be requested as options at the time of machine purchase.